

The Greyson T

1394 SQ FT

617-40 St. SW



- East facing backyard
- 3 bedroom, 2.5 bath
- Single family home with a single attached garage
- Pot & pendent lights in the kitchen
- Quartz countertops in the kitchen
- Railing with metal spindles on the main floor
- Maple cabinets in the kitchen with upper crown moulding
- Walk in pantry
- Second floor laundry
- Large master bedroom with an ensuite and a large walk in closet
- Master bedroom includes a ceiling fan
- Second bedroom includes a walk in closet
- Stainless steel kitchen appliances and white front load washer and dryer
- Laminate floors on the main floor and carpet on the second floor
- Pots and pan drawer
- Upgraded kitchen faucet
- Upgraded furnace to a high efficiency rated furnace

The Hills at Charlesworth Showhome

714 Charlesworth Way SW, Edmonton

587.521.5869

btate@bedrockhomes.ca

Job # CHH-0-033752 Lot 19, Block 2, Plan 152 2199

Notes:

bedrockhomes.ca

VISIT US AT ANY OF OUR SHOWHOMES!

Monday - Thursday 3-8pm, Weekends & Holidays 12-5PM

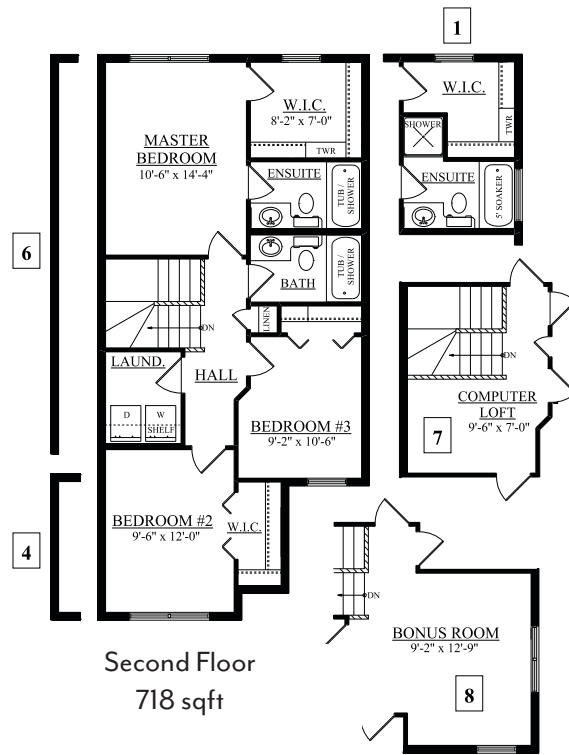
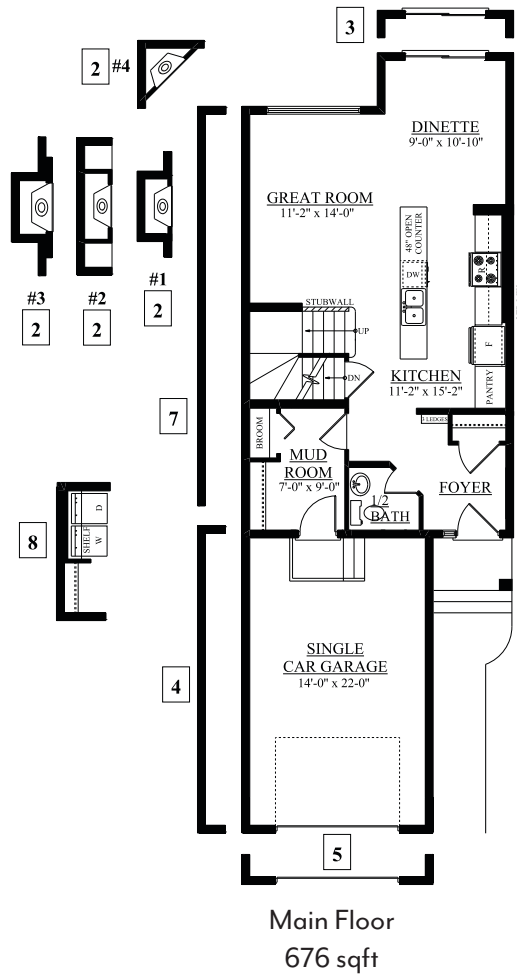


The Greyson T
 1394 SQ FT
 617-40 St. SW



The Hills at Charlesworth Showhome
 714 Charlesworth Way SW, Edmonton
 587.521.5869
 btate@bedrockhomes.ca

Job # CHH-0-033752 Lot 19, Block 2, Plan 152 2199



bedrockhomes.ca

VISIT US AT ANY OF OUR SHOWHOMES!
 Monday - Thursday 3-8pm, Weekends & Holidays 12-5PM

